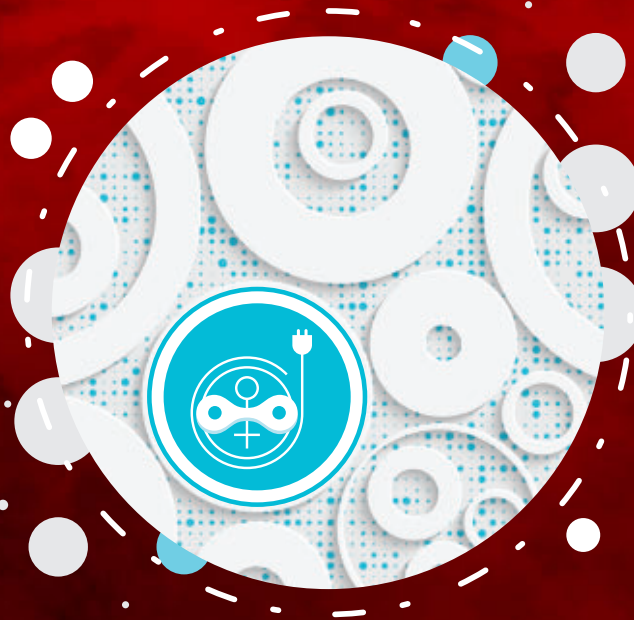




Medical Devices W'sHC



.....• pursuing the excellence



XLAB SOLUTIONS



XLAB SOLUTIONS

We are X-Lab Solutions

The story begins in 1992 when "a few good men" have founded a service organization for laboratory and blood gas instruments in Transilvania.

At first, X-Lab Solutions' activity focused on maintenance and repairs. Along the way, the development of turnkey medical projects and providing lab supplies, have become priorities.

Today, the main focus is on providing after-sales services for medical equipment and projects (installation, commissioning, training, application support, service, maintenance).

X-Lab Solutions achievements:

- OVER 110 equipped hospitals and the associated services delivered, all over Europe
- Over 120 private laboratories equipped with diagnostic systems and serviced
- Over 170 private healthcare institutions equipped with medical devices and accessories



XLAB SOLUTIONS

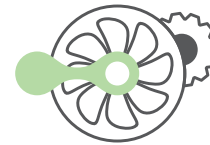
The pillars of X-Lab Solutions



POC
Point of care



W`sHC
In Vitro Fertilisation
& Medical Devices



SP
Special Projects

W`sHC - delivering excellence at every stage of the journey to a healthy and happy life!

IVF offers perfectly controlled conditions and state-of-the-art equipment to make every woman's dream of becoming a mother come true.

In Vitro Fertilisation

Medical Devices





XLAB SOLUTIONS



Leisegang® Colposcopes



Lone Star®



Endosee® Advance Hysteroscope



Rumi II Systems Uterine Manipulator



MILEX® Pessaries



Mystic II Pump

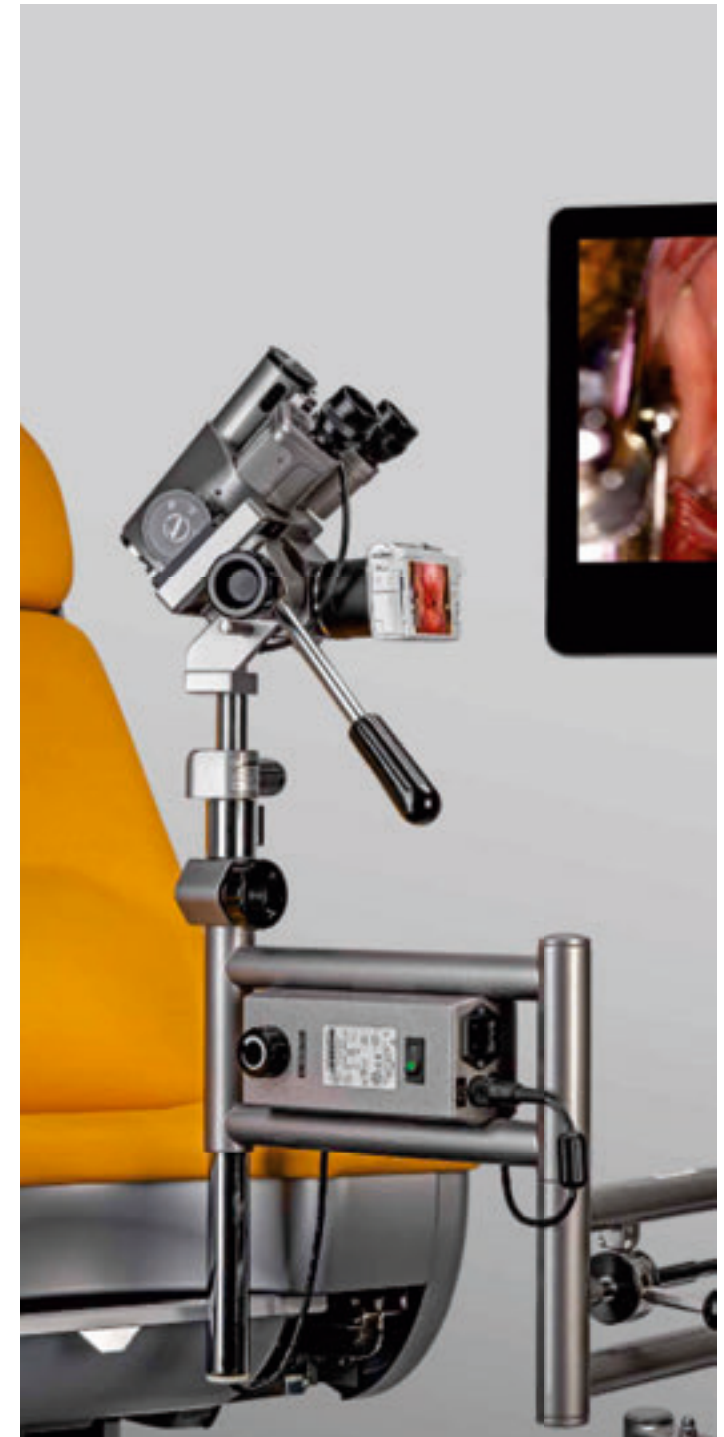
www.xlab.ro



CooperSurgical®

Healthy women, babies, and families™

Leisegang® Colposcopes





XLAB SOLUTIONS



Leisegang® Colposcopes



Lone Star®



Endosee® Advance Hysteroscope



Rumi II Systems Uterine Manipulator



MILEX® Pessaries

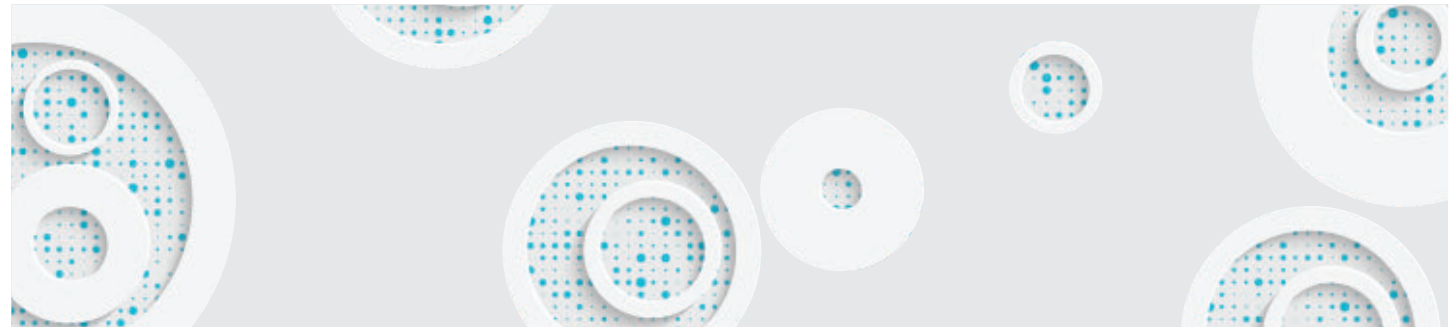


Mystic II Pump

About •—————

Leisegang® Colposcopes

- Convergent optical beam path for fatigue-free work
- Vivid, 3D image
- 300 mm working distance
- LED lighting: 5,700–6,000 Kelvin for excellent contrast
- LED lighting with a lighting strength of 45,000–52,000 Lux (at 300 mm)
- Only 10 W power consumption
- The lamps have a long lifetime and therefore do not need to be replaced
- Continuously variable adjustment
- Green filter for observation of blood vessels
- Compensation for myopia and hyperopia through adjustable oculars
- Class I medical devices





XLAB SOLUTIONS



Leisegang® Colposcopes



Lone Star®



Endosee® Advance Hysteroscope



Rumi II Systems Uterine Manipulator



MILEX® Pessaries



Mystic II Pump

About •

Standard Colposcopes

- Day-to-day consultations with various magnification settings
- Green filter for enhanced contrast and clarity
- Continuously adjustable LED lighting for optimal illumination
- Dioptric correction ranging from +7 to -7 diopters
- Working distance of 300 mm for comfortable use

1E LED

Entry level model for everyday consultations:
X15 fixed magnification



1D LED

Magnification changer for x 7.5-/15-/30 magnification
Green filter



1DW LED

Magnification changer for x 7.5-/15-/30 magnification.
No green filter





XLAB SOLUTIONS



Leisegang® Colposcopes



Lone Star®



Endosee® Advance Hysteroscope



Rumi II Systems Uterine Manipulator



MILEX® Pessaries



Mystic II Pump

About •

Photo/video Colposcopes

- Suitable for users with advanced requirements such as documentation
- Enables presentation of examination images on a monitor
- Highly dimmed lenses allow for a large depth of focus

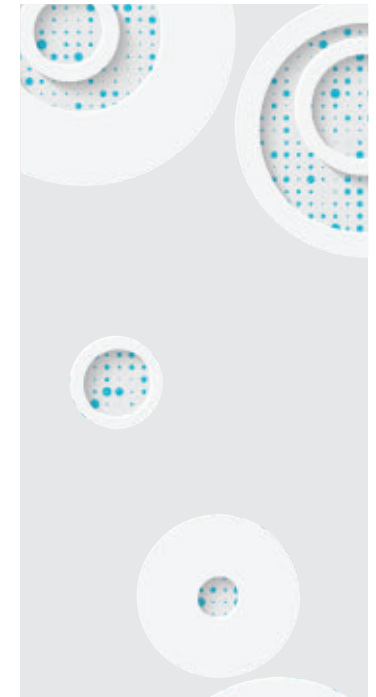
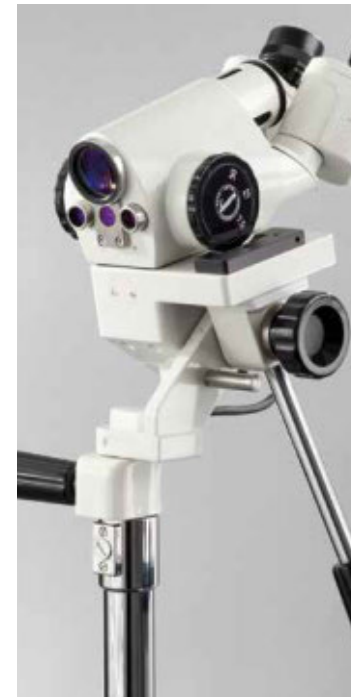
3ML LED

Magnification changer for
x 7.5/15/30 magnification
Green filter



3MLW LED

Magnification changer for
x 7.5-/15-/30 magnification
No green filter





XLAB SOLUTIONS

About ●————— Stands

- Can be either mobile or fixed to the gynecological examination chair
- Ease of use and a low space requirement
- Are accessories for colposcopes and also Class I medical devices

Balance-o-matic stand

Solid design with low space requirement



Swing-o-matic stand

Comfortable work thanks to "weightless", free movement



Upright Stand

Basic model



Leisegang® Colposcopes



Lone Star®



Endosee® Advance Hysteroscope



Rumi II Systems Uterine Manipulator



MILEX® Pessaries



Mystic II Pump



XLAB SOLUTIONS



Leisegang® Colposcopes



Lone Star®



Endosee® Advance Hysteroscope



Rumi II Systems Uterine Manipulator



MILEX® Pessaries



Mystic II Pump

Advantages •—————

Leisegang® Colposcopes

Manufacturing Production

100 % manufactured in the factory, with a large proportion of skilled craftsmanship.

Convergent Optics

The light beams coincide at a working distance of 300 mm, and thus the eye does not have to focus on this distance on its own.

Ergonomic Design

Ergonomically mounted adjustment knobs for height, focus and angular tilt allow the colposcope to be positioned with millimetre precision. Removable rings for the eyepiece caps make colposcopy possible even with glasses.

LED Lighting

Provides an extremely bright LED spotlight with a illumination intensity between 45,000 and 52,000 lux at a working distance of 300 mm.

Comfortable Stands

A slim, sophisticated design ensures reliable stability and allows for maximum possible movement for accurate positioning.

Durability

Impressive life and no need to change lamps.



XLAB SOLUTIONS



Leisegang® Colposcopes



Lone Star®



Endosee® Advance Hysteroscope



Rumi II Systems Uterine Manipulator



MILEX® Pessaries



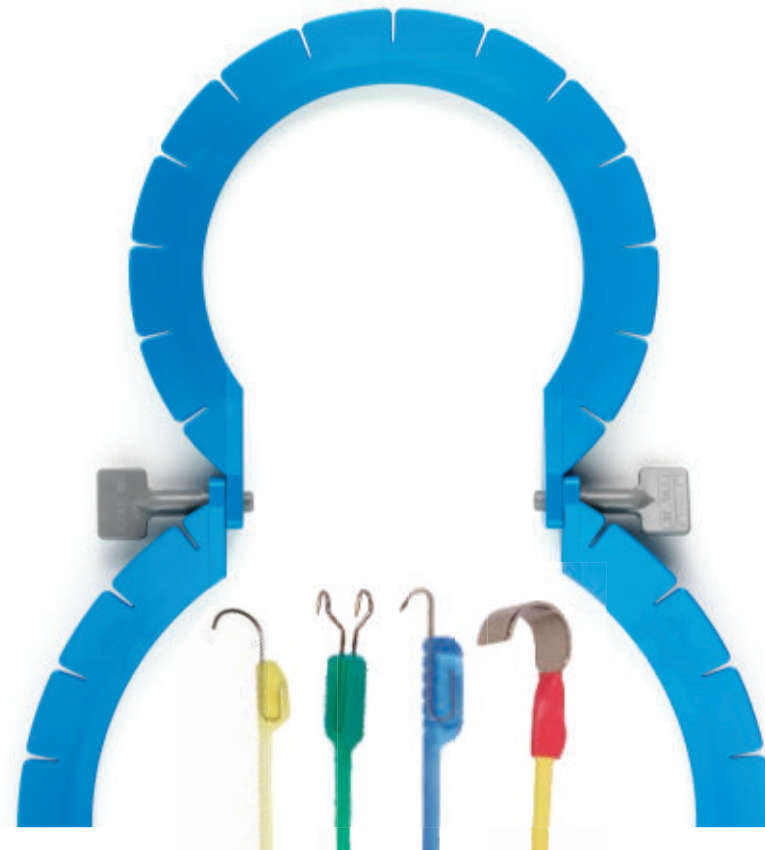
Mystic II Pump



CooperSurgical®

Healthy women, babies, and families™

Lone Star® Retractor System and Elastic Stays





Leisegang® Colposcopes



Lone Star®



Endosee® Advance Hysteroscope



Rumi II Systems Uterine Manipulator



MILEX® Pessaries

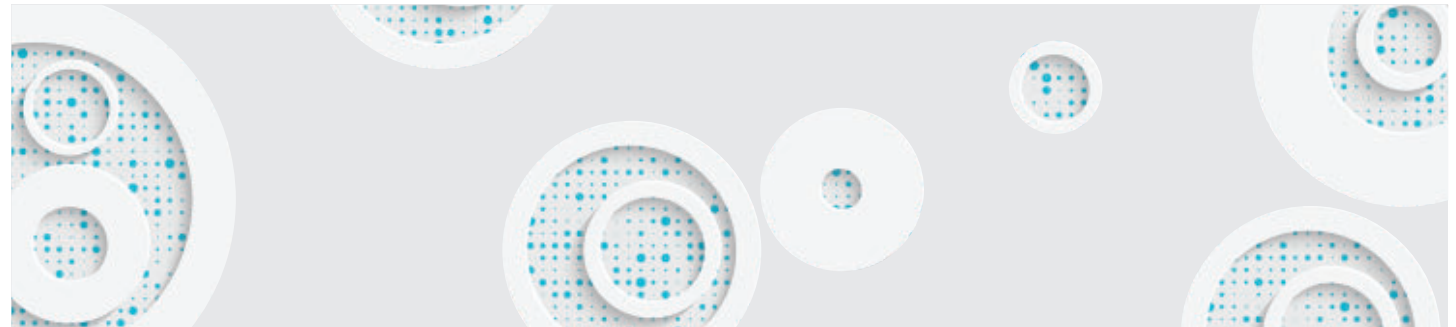


Mystic II Pump

About • ---

Lone Star® Retractor System and Elastic Stays

- Retractor rings are flexible by design, while the elastic stays quickly and safely adapt the retractor ring to site anatomy
- Self-retaining retractors provide exceptional visibility and access to patient anatomy
- Can be used with or without a wide variety of accompanying stays that can be repositioned to reveal additional layers as the surgery progresses
- Used for transvaginal procedures, including many common pelvic repair and reconstruction surgeries
- Used for transanal procedures, for treatment of anal and rectal cancer, as well as benign transanal and anorectal conditions
- Used in an array of microvascular breast procedures
- Used in an array of reconstructive urology procedures



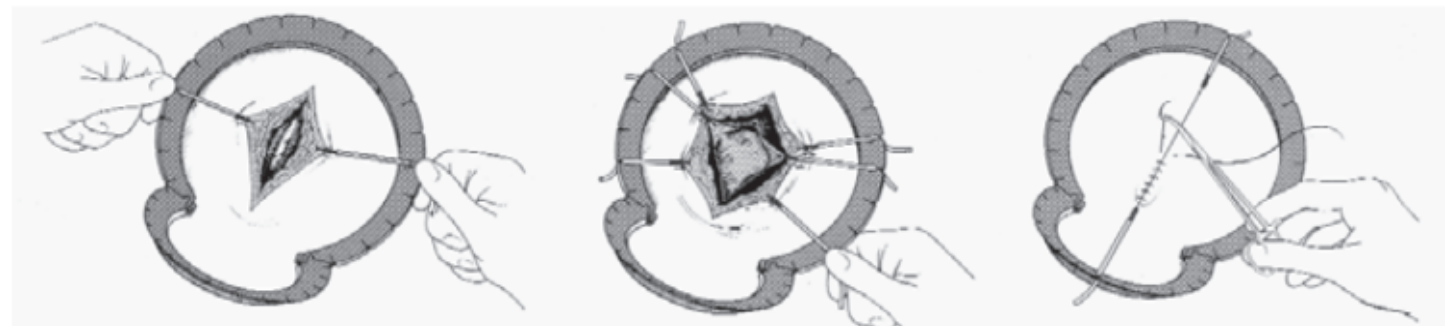


About •

Lone Star[®] Reusable Retractor Rings

- For a wide range of surgical procedures
- Excellent visibility
- Articulated design
- Adapts and repositions quickly, without placing undue pressure on delicate tissues
- Adjustable tension for optimal exposure
- Frees up OR staff
- Resilient aluminum and durable stainless steel construction stand up to repeated use

3 SIMPLE STEPS



1 Place Ring around initial incision. Insert Elastic Stay hooks into tissue and retract in directly opposing quadrants.


2 Reposition or add hooks throughout procedure to maintain balanced retraction.

3 When closing, place stays along axis of the incision to create tension to facilitate precise staple or suture placement.

 Leisegang[®] Colposcopes

 Lone Star[®]

 Endosee[®] Advance Hysteroscope

 Rumi II Systems Uterine Manipulator

 MILEX[®] Pessaries

 Mystic II Pump



XLAB SOLUTIONS



Leisegang® Colposcopes



Lone Star®



Endosee® Advance Hysteroscope



Rumi II Systems Uterine Manipulator



MILEX® Pessaries



Mystic II Pump



CooperSurgical®

Healthy women, babies, and families™

Endosee® Advance Hysteroscope





XLAB SOLUTIONS



Leisegang® Colposcopes



Lone Star®



Endosee® Advance Hysteroscope



Rumi II Systems Uterine Manipulator



MILEX® Pessaries



Mystic II Pump

About •—————

Endosee® Advance Hysteroscope

- Instruments for office diagnostic, therapeutic procedures
- Instant endometrial imaging guided by direct visualization
- Efficient workflow with in-office exams reduce OR visits
- Low-cost investment, coded and reimbursed hysteroscopy
- Used in viewing the cervical canal, uterine cavity, female urinary tract, including the bladder
- Color display ensures accurate, clear and color visualization
- Convenient design for versatile exam room
- Sterile, single-use cannula designed for easy insertion
- Reusable display module
- Channel for fluid infusion
- Reusable working channel instruments
- Still image or video capture of every exam
- Transfer exam data to computer via USB cable





XLAB SOLUTIONS



Leisegang® Colposcopes



Lone Star®



Endoscopy® Advance Hysteroscope



Rumi II Systems Uterine Manipulator



MILEX® Pessaries



Mystic II Pump

Advantages •————

Endoscopy® Advance Hysteroscope

See and know instantly with Endoscopy® Advance

Evaluate

- AUB: pre and postmenopausal bleeding
- Menstrual disorders: amenorrhea, intermenstrual, menorrhagia
- Infertility
- Recurrent miscarriage

Identify

- Polyps
- Fibroids
- Retained products of conception
- Tissue in need of biopsy for histologic evaluation
- Focal lesions missed with endometrial biopsy (EMB)
- Endometrial atrophy

Perform

- Transection of intrauterine adhesions and septa
- Directed endometrial biopsies
- Polypectomy (pedunculated, <2 cm)
- Localization and retrieval of IUD
- Plan for fibroid, polyp removal surgery



XLAB SOLUTIONS



Leisegang® Colposcopes



Lone Star®



Endosee® Advance Hysteroscope



Rumi II Systems Uterine Manipulator



MILEX® Pessaries



Mystic II Pump



CooperSurgical®

Healthy women, babies, and families™

Rumi II Systems Uterine Manipulator





XLAB SOLUTIONS



Leisegang® Colposcopes



Lone Star®



Endosee® Advance Hysteroscope



Rumi II Systems Uterine Manipulator



MILEX® Pessaries



Mystic II Pump

About ●—————

Rumi II Systems

- Ideal for diagnostic laparoscopy, myomectomy, oophorectomy, endometriosis excision, and infertility applications requiring reliable chromopertubation
- Offers superior uterine control and minimal tissue trauma
- Enables full control of the uterus in all directions: 90 degrees of anteversion, 50 degrees retroversion and maximum lateral positioning
- Provides unmatched exposure and access to important anatomical structures
- Adjustable with multiple tips and Koh-Efficient Cups sizes
- Soft, flexible distal tips, which reduce the uterine perforation and trauma and allow the intrauterine balloon to be inflated with saline, providing unmatched durability even during caudal traction
- Koh-Efficient cups help distance critical anatomy to create a margin of safety by preserving the uterosacral ligaments and displacing the ureters during colpotomy incision

Easy load system





XLAB SOLUTIONS



Leisegang® Colposcopes



Lone Star®



Endosee® Advance Hysteroscope



Rumi II Systems Uterine Manipulator



MILEX® Pessaries



Mystic II Pump

Advantages •

Rumi II Systems

Superior uterine exposure and access

Full uterine control: 90° anteversion, 50° retroversion, lateral positioning.

Superior control and ideal visualization

2 inch longer shaft for better access.

6 tip sizes accommodate individual patient anatomy.

Sacrocolpopexy and sacrocervicopexy tips available.

Koh-Efficient® technology for easy, fast, safe TLHs.

Catheter management system.

Unparalleled visualization and pelvic access

Flexible with diverse single-use intrauterine tips.

Tips: the right size and less trauma

Available in six sizes, the RUMI Tips have a soft, flexible distal tip, which reduces the risk of uterine perforation and trauma.

RUMI II /Koh-Efficient

Four sizes to suit patient anatomical needs.





XLAB SOLUTIONS



Leisegang® Colposcopes



Lone Star®



Endosee® Advance Hysteroscope



Rumi II Systems Uterine Manipulator



MILEX® Pessaries



Mystic II Pump



CooperSurgical®

Healthy women, babies, and families™

MILEX® Pessaries





XLAB SOLUTIONS



Leisegang® Colposcopes



Lone Star®



Endosee® Advance Hysteroscope



Rumi II Systems Uterine Manipulator



MILEX® Pessaries


















Mystic II Pump

About ●————

MILEX® Pessaries

- Effective, first-line therapy for incontinence and pelvic organ prolapse
- Available in a range of sizes and shapes
- Various pessary types for specific functions, needs

Pessaries Type

Ring 	I. Ring 	I. Dish with support 	Gellhorn 
Ring with knob 	Shatz 	Gehrung 	Cube 
Ring with support 	Hodge 	Gehrung with knob 	Inflatoball 
Ring with support and knob 	I. Dish 	Donut 	

I. - Incontinence



XLAB SOLUTIONS



Leisegang® Colposcopes



Lone Star®



Endosee® Advance Hysteroscope



Rumi II Systems Uterine
Manipulator



MILEX® Pessaries



Mystic II Pump



CooperSurgical®

Healthy women, babies, and families™

Mystic II Pump





XLAB SOLUTIONS



Leisegang® Colposcopes



Lone Star®



Endosee® Advance Hysteroscope



Rumi II Systems Uterine Manipulator



MILEX® Pessaries



Mystic II Pump

About •—————

Mystic II Pump

- Vacuum assisted delivery system
- Safety valve ensures the gauge will not allow the user to exceed vacuum levels beyond 58 cmHg
- Soft Bell cups result in less trauma
- Mystic II M-Style® Mushroom® cups for gentle non-OA deliveries requiring higher traction
- Mystic II M-Style cup simplifies C-section vacuum usage
- Mystic II has a safety valve limiting vacuum





XLAB SOLUTIONS



Leisegang® Colposcopes



Lone Star®



Endosee® Advance Hysteroscope



Rumi II Systems Uterine Manipulator



MILEX® Pessaries



Mystic II Pump

Advantages •

Mystic II Pump

Gentle and effective

Natural grip provides reliable and comfortable performance for the clinician.

Easy to use

Unparalleled pump action creates vacuum with minimal effort.

Easy-to-read color-coded vacuum gauge.

Mini-grip handle for improved control with traction.

MITYVAC® VACUUM - ASSISTED DELIVERY SYSTEM



Superior control

Easy-to-reach vacuum release valve improves clinician control.

Ergonomic design allows intuitive handling.

Freely rotating cup minimizes torsion-related injuries.

Versatile

Extended stem and low-profile cup make Mystic II appropriate for both cesarean and vaginal deliveries.

Available in the most popular cup styles.

Self-contained unit with hand pump available.

Total availability in less than 24 h anywhere in Romania and Moldova.

Contact us for technical support, service for your equipment or consumables.



We are offering an unique and customized range of services:

SALES SERVICES

Our sales representatives deeply understand your needs and guide in taking your best decisions.

TRAINING SERVICES

Through our training services you will know exactly how to operate your equipment according to the manufacturer's instructions.

MAINTENANCE & SUPPORT

Our engineers are highly skilled in servicing the equipment we provide.

Cluj-Napoca Head Office

Calea Manastur 70, Ap 30, Cluj-Napoca, Romania
Tel.: +40 264 42 76 77 · E-mail: office@xlab.ro

Bucharest

Sos. Odai 207A Bucharest 1, Romania
Tel.: +40 21 332 76 31 · E-mail: office@xlab.ro

Chisinau

Negresteni 9, Chisinau, Moldova
Tel.: +40 729038 316 · E-mail: office@xlab.ro

www.xlab.ro