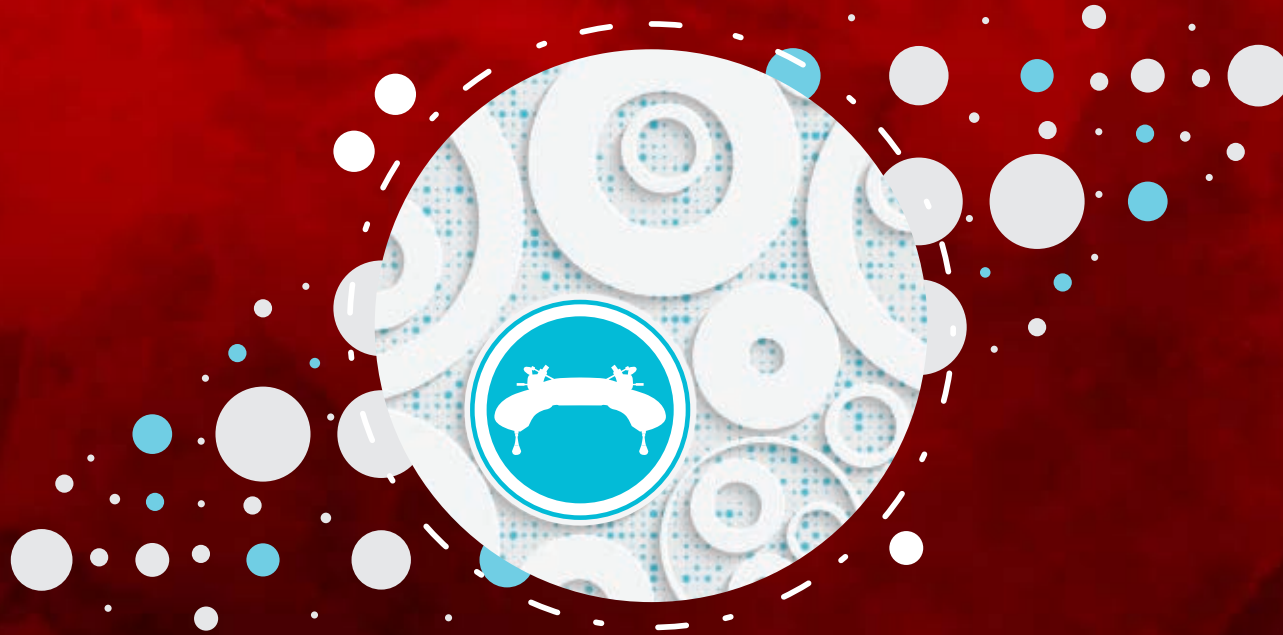


# ICSI Systems W`SHC



XLAB SOLUTIONS

.....• pursuing the excellence



XLAB SOLUTIONS

# We are X-Lab Solutions

The story begins in 1992 when "a few good men" have founded a service organization for laboratory and blood gas instruments in Transilvania.

**At first**, X-Lab Solutions' activity focused on maintenance and repairs. Along the way, the development of turnkey medical projects and providing lab supplies, have become priorities.

**Today**, the main focus is on providing after-sales services for medical equipment and projects (installation, commissioning, training, application support, service, maintenance).

## **X-Lab Solutions achievements:**

- OVER 110 equipped hospitals and the associated services delivered, all over Europe
- Over 120 private laboratories equipped with diagnostic systems and serviced
- Over 170 private healthcare institutions equipped with medical devices and accessories



XLAB SOLUTIONS

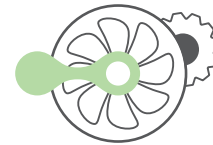
# The pillars of X-Lab Solutions



**POC**  
Point of care



**W`sHC**  
In Vitro Fertilisation  
& Medical Devices



**SP**  
Special Projects

**W`sHC** - delivering excellence at every stage of the journey to a healthy and happy life!

**IVF** offers perfectly controlled conditions and state-of-the-art equipment to make every woman's dream of becoming a mother come true.

# In Vitro Fertilisation

## ICSI Systems





XLAB SOLUTIONS



Inverted Microscopes



RI Integra 3™



CooperSurgical®

Fertility Solutions

# Inverted Microscopes





XLAB SOLUTIONS



Inverted Microscopes



RI Integra 3™

# About ● --- **Inverted Microscopes**

- Microscopes for an optimized IVF procedures flow
- Modulation contrast converts surface height differences to brightness contrast for 3D observation, ideal for viewing sperm and egg cells

## Olympus Configuration

	Olympus IX73 Premium	Olympus IX73 Standard
4x Objective	4x, NA 0.1, WD 18.5mm, Plan Achro	4x, NA 0.1, WD 18.5mm, Plan Achro
10 x Objective	10x, NA 0.25, WD 9.7mm Achromatic	10x, NA 0.25, WD 9.7mm Achromatic
20x Objective	20x, NA 0.45, WD 6.6 – 7.8mm, Semi Apo	20x, NA 0.40, WD 2.8mm Achromatic
40x Objective	40x, NA 0.6, WD 2.7-4mm, Semi Apo	40x, NA 0.55, WD 1.9mm Achromatic
Tilting eyepieces	Yes	Yes
Condenser	Ultra-Long Working Distance Condenser, NA 0.3/ W.D. 73.3 mm	Ultra-Long Working Distance Condenser, NA 0.3/ W.D. 73.3 mm

## Nikon Configuration

	Nikon Ti2 Premium	Nikon Ti2 Standard
4x Objective	4x, NA 0.14, WD 17.1mm, Plan Flourite	4x, NA 0.1, WD 6.2mm, Plan Achromat
10x Objective	10x, NAMC, NA 0.25, WD 6.2mm, Achromat	10x, NAMC, NA 0.25, WD 6.2mm, Achromat
20x Objective	20x, NAMC, NA 0.45, WD 7.4mm, Coverslip correction 0-2mm S Plan Flourite	20x, NAMC, NA 0.4, WD 3.1, Coverslip correction 0-1.2mm, Achromat
40x Objective	40x, NAMC, NA 0.6, WD 3.1mm, Coverslip correction 0-2mm S Plan Flourite	40x, NAMC, NA 0.55, WD 2.1mm Coverslip Correction 0-2mm, Achromat
Tilting eyepieces	No	No
Condenser	7 manual positions (ø37mm x4, ø39mm x3), LWD/ELWD/CLWD/NAMC condenser lenses are supported	7 manual positions (ø37mm x4, ø39mm x3), LWD/ELWD/CLWD/NAMC condenser lenses are supported





XLAB SOLUTIONS



Inverted Microscopes



RI Integra 3™

- Thermosafe™ Air Heating System
- Syringes For Micromanipulation



CooperSurgical®  
Fertility Solutions

## RI Integra 3™

Thermosafe™ Air Heating System  
- Ultimate Thermal Control for RI Integra 3™





XLAB SOLUTIONS



Inverted Microscopes



RI Integra 3™

- Thermosafe™ Air Heating System
- Syringes For Micromanipulation

## About ●—————

# RI Integra 3™

### Colour Touch Screen

With the 3.5-inch touchscreen display, monitor temperature, track time with a stopwatch, and count injections. Electronic height indicators track tool holder positions vertically.

### Motion Triggered LED Light

A motion triggered light illuminates under the stage as soon as it detects your hand, to help you see when changing objectives.

### RI Viewer™ Software

You can use the RI Integra 3™ without a computer or camera.

With RI Viewer™ you can use the shortcut keys. Enjoy razor-sharp full screen imaging from the microscope, with digital magnification and a modern, clean user interface.

### Shortcut Video And Images

If you need to keep track of samples or procedures, just hit the shortcut buttons to film or photograph any stage of the process. There's a counter button and an onscreen stopwatch as well.

### Precise And Intuitive Control

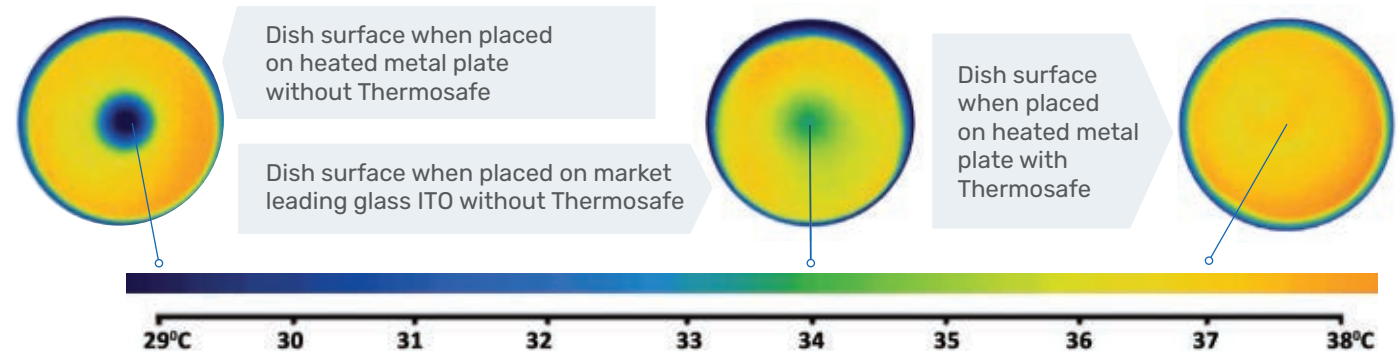
When you perform ART micromanipulation procedures, accuracy is paramount. RI Integra 3™ offers the finest possible movement on the XYM stage and fine and coarse levers as well as a choice of oil or air syringes for the control of samples.



# About •

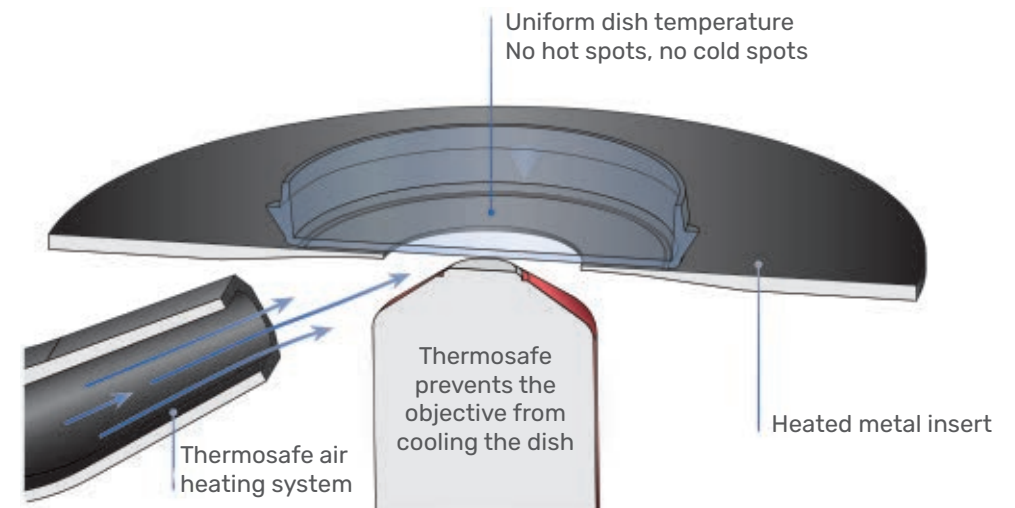
## Thermosafe™ Air Heating System

Provides optimum temperature control during extended micromanipulation procedures such as ICSI, IMSI and embryo biopsy.



- No Cold Spots
- Super-Fast
- Practical
- Safe
- Integrated
- Accurate

Cross section view





- Thermosafe™ Air Heating System
- Syringes For Micromanipulation

# About •

## Syringes For Micromanipulation

- The Integra 3™ includes two SAS™ air syringes as standard
- These syringes offer superb control and eliminate the need for oil
- Also available is the SAS-SE™ and SOS™ oil syringe

### SAS-SE™ and SAS™ Air Syringe

- Easy To Use
- Uncomplicated
- For Air-Filled Aspiration/Injection
- Accurate
- Sensitive Control
- Low Dead-Air Volume
- High Suction/Pressure
- Equilibrating Button

### SOS™ Oil Syringe

- For Oil-Filled Aspiration/Injection
- Easy Refill Feature
- Accurate
- Sensitive Control
- High Suction/Pressure
- Excellent Ergonomics
- Specially designed for microinjection of spermatozoa, holding of cells, extraction and transfer of cells
- Can be used with all common micromanipulation systems



# Total availability in less than 24 h anywhere in Romania and Moldova.

Contact us for technical support, service for your equipment or consumables.



We are offering an unique and customized range of services:

## SALES SERVICES

Our sales representatives deeply understand your needs and guide in taking your best decisions.

## TRAINING SERVICES

Through our training services you will know exactly how to operate your equipment according to the manufacturer's instructions.

## MAINTENANCE & SUPPORT

Our engineers are highly skilled in servicing the equipment we provide.

### Cluj-Napoca Head Office

Calea Manastur 70, Ap 30, Cluj-Napoca, Romania  
Tel.: +40 264 42 76 77 · E-mail: office@xlab.ro

### Bucharest

Sos. Odai 207A Bucharest 1, Romania  
Tel.: +40 21 332 76 31 · E-mail: office@xlab.ro

### Chisinau

Negresteni 9, Chisinau, Moldova  
Tel.: +40 729038 316 · E-mail: office@xlab.ro

[www.xlab.ro](http://www.xlab.ro)