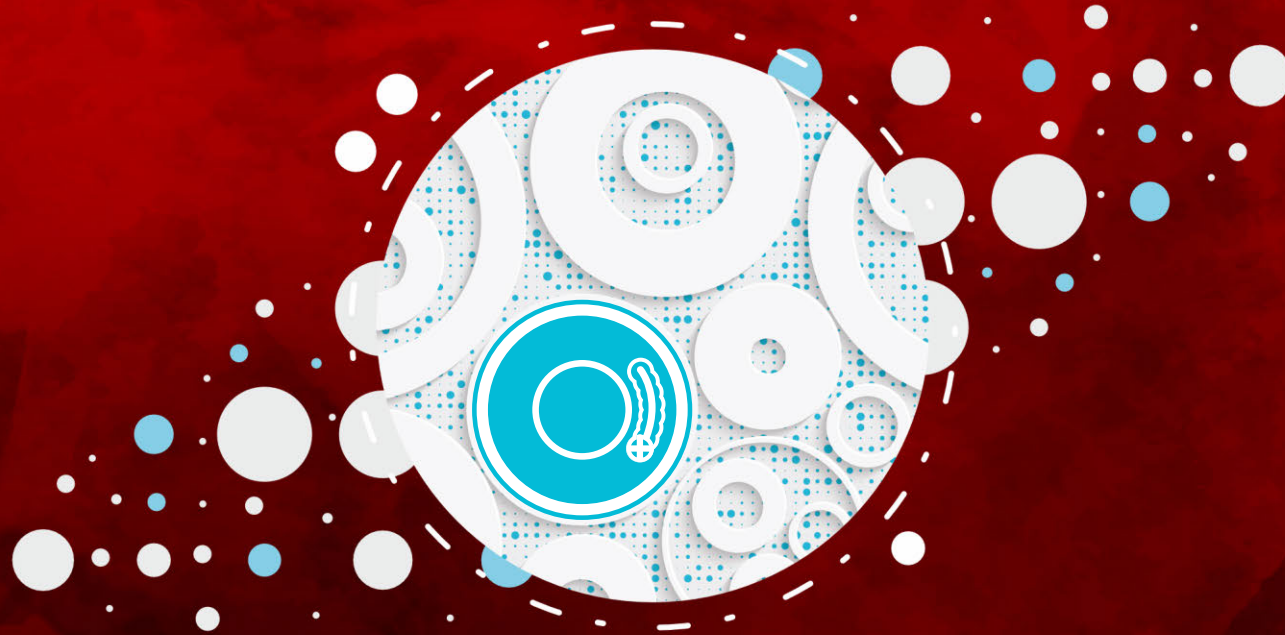


Laser
W`shC



.....• pursuing the excellence



XLAB SOLUTIONS



XLAB SOLUTIONS

We are X-Lab Solutions

The story begins in 1992 when “a few good men” have founded a service organization for laboratory and blood gas instruments in Transilvania.

At first, X-Lab Solutions' activity focused on maintenance and repairs. Along the way, the development of turnkey medical projects and providing lab supplies, have become priorities.

Today, the main focus is on providing after-sales services for medical equipment and projects (installation, commissioning, training, application support, service, maintenance).

X-Lab Solutions achievements:

- OVER 110 equipped hospitals and the associated services delivered, all over Europe
- Over 120 private laboratories equipped with diagnostic systems and serviced
- Over 170 private healthcare institutions equipped with medical devices and accessories



XLAB SOLUTIONS

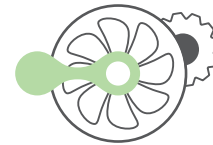
The pillars of X-Lab Solutions



POC
Point of care



W`sHC
In Vitro Fertilisation
& Medical Devices



SP
Special Projects

W`sHC - delivering excellence at every stage of the journey to a healthy and happy life!

IVF offers perfectly controlled conditions and state-of-the-art equipment to make every woman's dream of becoming a mother come true.

In Vitro Fertilisation

Laser



Saturn 5 Active™

Fixed and Directional Laser Systems



About •

Saturn 5 Active™

- First directional laser on the market.
- A must for biopsies, assisted hatching and zona thinning.
- Biopsy Mode improves biopsy methods, reducing procedure time, lowering blastocyst collapse, and eliminating mechanical cell tearing.

Specifications:

Pilot Laser	● 630-650nm spot targeting solid state diode laser – red pilot beam guarantees the position of the invisible ablation laser. It is impossible for the pilot and ablation lasers to be out of alignment with each other
Objective	● Custom designed objective for optimum laser transmission, crystal clear imaging and minimal laser pulse times. Tested and proven not to exhibit astigmatism with RI Saturn 5™ Laser Systems. 20x and 40x objectives are available
Ablation Laser	● 1480nm / 400mW solid state diode laser. Pulse length range 0.005-2.0ms / 5-2000µs. Class 1 laser product. Tested and proven not to exhibit thermal lensing
Laser unit dimensions: (WxDxH)	● 220mm x 180mm x 34mm
CRi Oosight™ Compatibility	● Compatible with CRi Oosight™ and SpindleView™ systems
Fluorescence Compatibility	● RI Saturn™ Lasers Systems are compatible with epi-fluorescence on selected microscopes
Operation Software	● RI Viewer™ imaging software included – with digital laser targeting
PC System Requirements	● Operating systems: Windows 10, Windows 11
Mains Input	● 100-240VAC, 50-60Hz

Advantages •

Saturn 5 Active™

Faster Biopsies

Biopsy mode enables precise laser drilling along straight or curved lines.

Excellent Accuracy

Excellent accuracy and unique computer controlled laser with guaranteed laser alignment.

Versatile

Compatible with all popular micromanipulator and inverted microscope brands.

Intuitive Software

Intuitive RI Viewer software with streamlined interface. Programmable foot pedal controls software and laser functions, including biopsy mode.

Safest Lasers on the Market

Lowest laser pulse energy for minimal energy near critical cells. Exclusion Zone™ feature ensures cell safety.



Total availability in less than 24 h anywhere in Romania and Moldova.

Contact us for technical support, service for your equipment or consumables.



We are offering an unique and customized range of services:

SALES SERVICES

Our sales representatives deeply understand your needs and guide in taking your best decisions.

TRAINING SERVICES

Through our training services you will know exactly how to operate your equipment according to the manufacturer's instructions.

MAINTENANCE & SUPPORT

Our engineers are highly skilled in servicing the equipment we provide.

Cluj-Napoca Head Office

Calea Manastur 70, Ap 30, Cluj-Napoca, Romania
Tel.: +40 264 42 76 77 • E-mail: office@xlab.ro

Bucharest

Sos. Odai 207A Bucharest 1, Romania
Tel.: +40 21 332 76 31 • E-mail: office@xlab.ro

Chisinau

Negresteni 9, Chisinau, Moldova
Tel.: +40 729038 316 • E-mail: office@xlab.ro

www.xlab.ro