



Fertilization & Culture Media

W`sHC



.....• pursuing the excellence



XLAB SOLUTIONS



XLAB SOLUTIONS

We are X-Lab Solutions

The story begins in 1992 when "a few good men" have founded a service organization for laboratory and blood gas instruments in Transilvania.

At first, X-Lab Solutions' activity focused on maintenance and repairs. Along the way, the development of turnkey medical projects and providing lab supplies, have become priorities.

Today, the main focus is on providing after-sales services for medical equipment and projects (installation, commissioning, training, application support, service, maintenance).

X-Lab Solutions achievements:

- OVER 110 equipped hospitals and the associated services delivered, all over Europe
- Over 120 private laboratories equipped with diagnostic systems and serviced
- Over 170 private healthcare institutions equipped with medical devices and accessories



XLAB SOLUTIONS

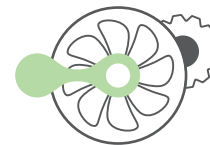
The pillars of X-Lab Solutions



POC
Point of care



W`sHC
In Vitro Fertilisation
& Medical Devices



SP
Special Projects

W`sHC - delivering excellence at every stage of the journey to a healthy and happy life!

IVF offers perfectly controlled conditions and state-of-the-art equipment to make every woman's dream of becoming a mother come true.

In Vitro Fertilisation

Fertilization & Culture Media





XLAB SOLUTIONS



Fertilization media

- ORIGIO[®], SAGE[™] and LifeGlobal[®] culture media



Culture media



Transfer media



CooperSurgical[®]

Fertility Solutions

Fertilization media





XLAB SOLUTIONS



Fertilization media

- ORIGIO®, SAGE™ and LifeGlobal® culture media



Culture media



Transfer media

About •

Fertilization media

- Minimized stress and optimal fertilization.
- Supports conventional IVF and ICSI procedures.
- Designed to nurture both gametes during fertilization.
- Promotes optimal sperm function for enhanced success.
- Shared base formulation minimizes stress for optimal fertilization.



About •

ORIGIO[®], SAGE[™] and LifeGlobal[®] culture media

-  Fertilization media
- ORIGIO[®], SAGE[™] and LifeGlobal[®] culture media

-  Culture media

-  Transfer media

- ● ORIGIO[®], SAGE[™] and LifeGlobal[®]:
 - three established brands
 - a common philosophy
 - to enhance clinic success with quality ART media
- ● Media for every step of the ART journey, including: oocyte retrieval andrology, fertilization, embryo culture and biopsy, cryopreservation.
- ● The role of culture media in ART.
- ● Culture systems minimize stresses to gametes and embryos *in vitro*.
- ● They deliver a balance of ions, energy substrates, and nutrients.
- ● Essential for optimizing clinical outcomes in the ART lab.





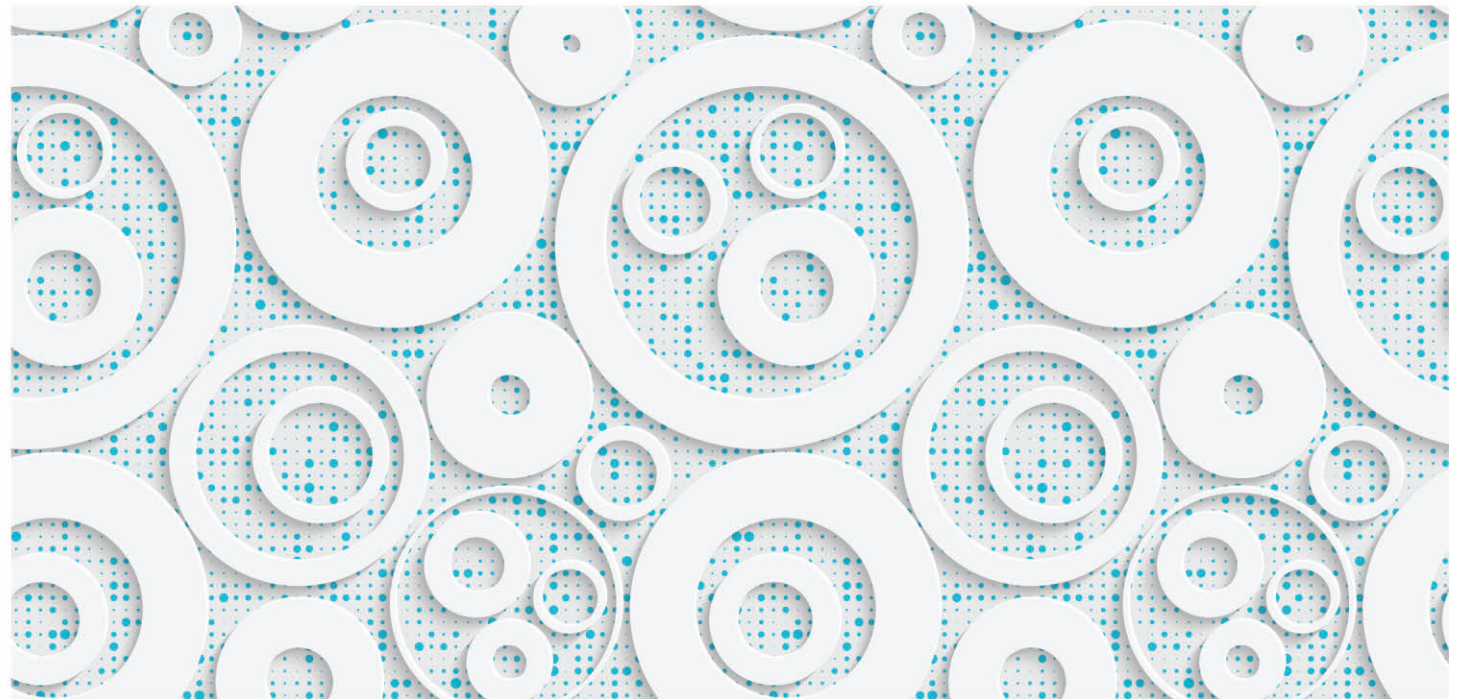
Culture media

 Fertilization media

 Culture media

- SAGE 1-Step™ Medium
- Culture media with GM-CSF

 Transfer media





XLAB SOLUTIONS



Fertilization media



Culture media

- SAGE 1-Step™ Medium
- Culture media with GM-CSF



Transfer media

About •

Culture media

Single-step embryo culture media

Supports uninterrupted culture of embryos to blastocyst stage.

Comparable efficacy to sequential media for embryogenesis.

Global® is protein-free medium with 15 years of proven performance.

SAGE 1-Step™: Ready-to-use culture medium with HA and HSA.

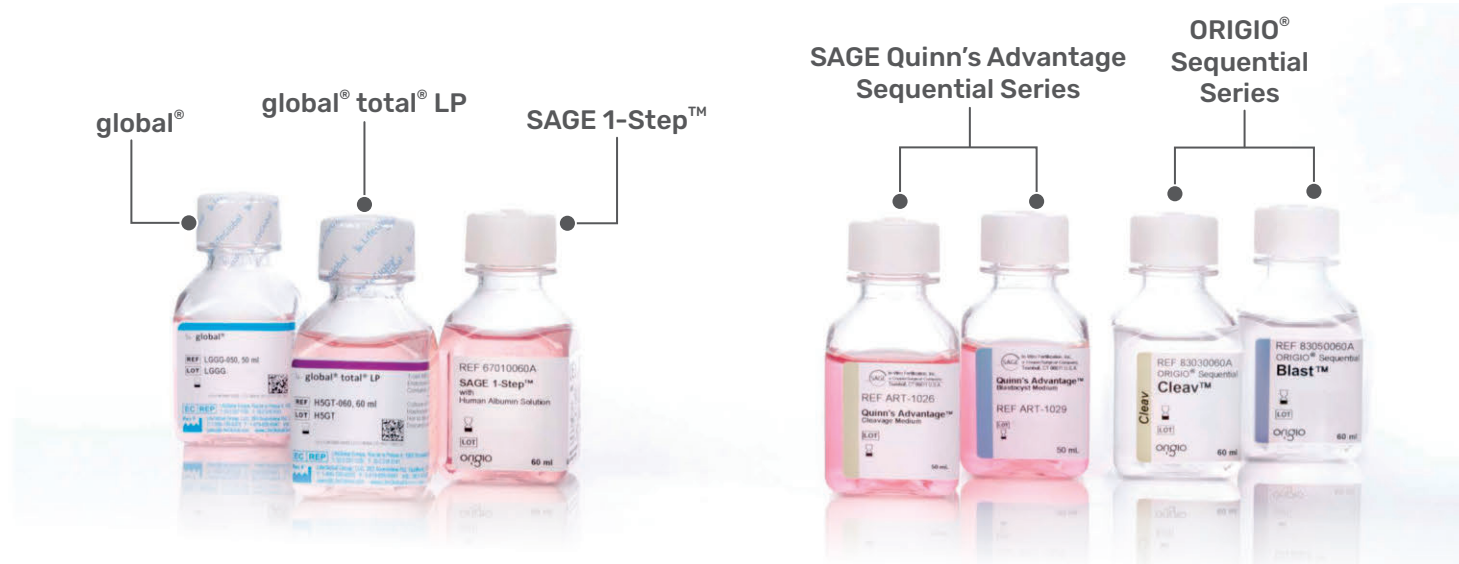
Sequential embryo culture media

Replicates the *in vivo* environment for embryos.

Meet their metabolic and physiological needs at each stage.

The Origio Sequential Series is formulated with research-backed concentrations for optimal cellular function.

Hyaluronan enhances embryo development and implantation rates.





Fertilization media



Culture media

- SAGE 1-Step™ Medium
- Culture media with GM-CSF



Transfer media

About •

SAGE 1-Step™ Medium

- Ongoing support for the embryo.
- Simplified protocol, maintains embryo utilization and pregnancy rates.
- Hyaluronan with HSA promotes embryonic development, cryosurvival.
- Optimized D-glucose, L-lactate for continuous uninterrupted culture.
- Reduces ammonium accumulation with stable glutamine.
- Limits stress-induced calcium influx with high Mg^{2+} to Ca^{2+} ratio.
- Bioactive L-lactate for precise control of intracellular pH.

Specifications:

- Recommended pH (6% CO_2 *): 7.3 ± 0.1
- HSA: 5 mg/ml
- Osmolality: 257–273 mOsm/kg
- Mouse embryo assay (MEA): >80% (BL Rate/1-cell)
- Shelf life is 26 weeks from date of manufacture; shelf life after opening is 7 days
- Ready to use

Components:

Sodium hyaluronate	Gentamicin sulfate
HSA	Phenol red
Physiological salts	Essential amino acids
Energy substrates	Non-essential amino acids
EDTA	Antioxidants





Fertilization media



Culture media

- SAGE 1-Step™ Medium
- Culture media with GM-CSF



Transfer media

About •

Culture media with GM-CSF

Increased chances for successful implantations

- Embryo-endometrial communication is essential for a successful pregnancy.
- Cytokines play a key role in stimulating this communication.
- GM-CSF supplementation enhances implantation and pregnancy success rates.
- Mimics the female reproductive tract environment.
- Enhances endometrial receptivity for successful implantation.
- Facilitates communication between embryo and endometrium.

EmbryoGen®



BlastGen™



Protein Options

HSA 5 mg/ml



XLAB SOLUTIONS



Fertilization media



Culture media



Transfer media



CooperSurgical®

Fertility Solutions

Transfer media



About •

UTM™ Media

- For transfer of embryos and blastocysts.
- Hyaluronan-rich transfer medium.
- Hyaluronan significantly improves pregnancy rates.

Description	Size	HSA mg/ml	Shelf Life Guarantee*
UTM™, with phenol red	10 ml	3 mg/mL	Minimum 8 weeks
UTM™, without phenol red	10 ml	3 mg/mL	Minimum 8 weeks

Quality control testing

- Sterility tested (Ph. Eur., USP)
- Osmolality tested (Ph. Eur., USP)
- pH tested (Ph. Eur., USP)
- Endotoxin tested < 0.1 EU/ml (Ph. Eur., USP)
- Mouse Embryo Assay (MEA)



Total availability in less than 24 h anywhere in Romania and Moldova.

Contact us for technical support, service for your equipment or consumables.



We are offering an unique and customized range of services:

SALES SERVICES

Our sales representatives deeply understand your needs and guide in taking your best decisions.

TRAINING SERVICES

Through our training services you will know exactly how to operate your equipment according to the manufacturer's instructions.

MAINTENANCE & SUPPORT

Our engineers are highly skilled in servicing the equipment we provide.

Cluj-Napoca Head Office

Calea Manastur 70, Ap 30, Cluj-Napoca, Romania
Tel.: +40 264 42 76 77 • E-mail: office@xlab.ro

Bucharest

Sos. Odai 207A Bucharest 1, Romania
Tel.: +40 21 332 76 31 • E-mail: office@xlab.ro

Chisinau

Negresteni 9, Chisinau, Moldova
Tel.: +40 729038 316 • E-mail: office@xlab.ro

www.xlab.ro